

Kijsiam Steel Bars

Company Limited

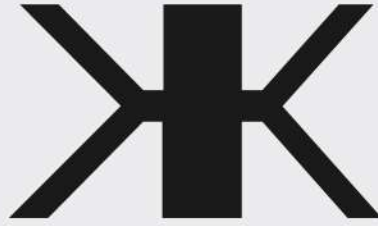
บริษัท กิจสยามสตีลบาร์ส จำกัด



Line : @kijsiam5

www.kijsiamsteel.com

Tel : 044-2655-55



KIJSIAM STEEL BARS
COMPANY LIMITED

บริษัท กิจสยามสตีลบาร์ส จำกัด

บริษัท กิจสยามสตีลบาร์ส บริษัท กิจสยามสตีลบาร์ส

จำกัด ดำเนินการก่อตั้งในปี 2528

โดยมีวัตถุประสงค์ในการก่อตั้งเพื่อจัดจำหน่ายเหล็กเส้นและเหล็กรูปพรรณทุกชนิดที่ได้รับมาตรฐานผลิตภัณฑ์อุตสาหกรรม(มอก.) และเป็นหนึ่งในตัวแทนจำหน่ายของบริษัทผลิตเหล็กชั้นนำของประเทศ ที่มีคุณภาพและมาตรฐานสำหรับร้านค้าผู้รับเหมาโครงการก่อสร้างต่างๆ ทั้งภาครัฐและเอกชนทั่วประเทศได้รับการยอมรับจากกลุ่มลูกค้าทั้งรายเล็กและรายใหญ่ในด้านบริการและสินค้าที่มีคุณภาพสูง

Kijsiam Steel Bars Company Limited is the distributor of variety high quality steel products such as wiremesh, steel, steel bar, steel coil, etc.

that are suitable for all type of construction projects as well as automobile and parts, furniture, and so on. All of our product earned both domestic and international standard certification. With more than 30 years of experienced, our company has been growing rapidly and highly trusted by all customers in term of services as well as high quality products.

www.kijsiamsteel.com



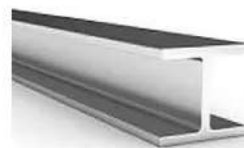
Channels Steel
เหล็กรางน้ำ



I-Beam Steel
เหล็กไอบีเอ็ม



Wide Flange Steel
เหล็กไวด์แฟรงค์



H-Beam Steel
เหล็กเอชบีเอ็ม



Carbon Square Tube
เหล็กกล่องเหลี่ยม



Rectangular Tube
เหล็กกล่องแบน



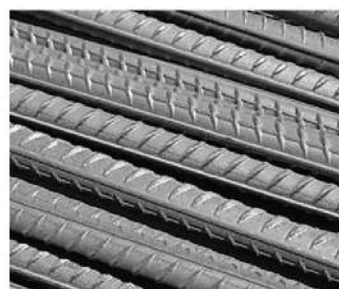
Equal Angles
เหล็กฉาก



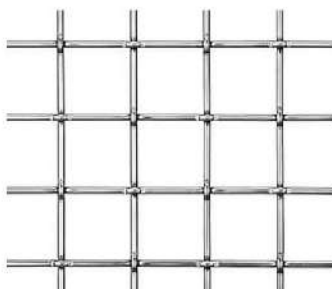
Carbon Steel Pipes
ท่อเป็ดำ



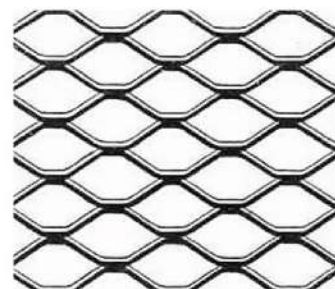
Round Bars Steel
เหล็กเส้นกลม



Deformed Bars Steel
เหล็กข้ออ้อย



Wire mesh
ตะแกรงเหล็กไวร์เมช



Expanded Metal
ตะแกรงเหล็กฉีก



Metal Plate
เหล็กแผ่น



Checkered Plates
เหล็กแผ่นลาย



Flat Bars Steel
เหล็กแบน



C Channels
เหล็กตัวซี



Galvanized Steel Pipes
ท่อดำ



Black Iron Wire
ลวดเหล็ก

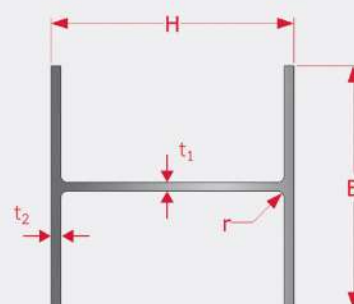
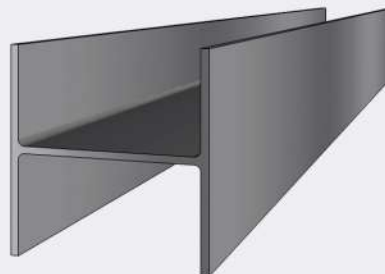


Nail
ตะปู



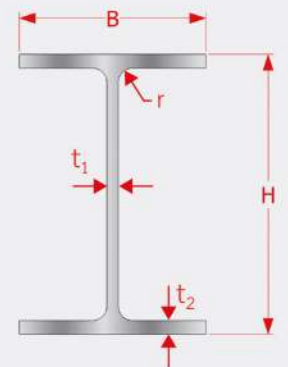
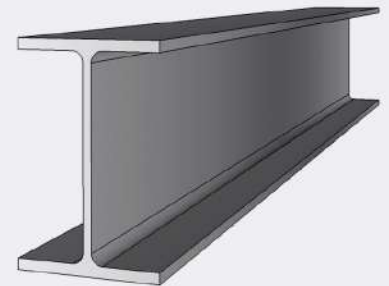
เหล็กเอชบีม (H-Sections)

NOMINAL SIZE	WEIGHT	STANDARD SECTIONAL DIMENSION (mm.)					WEIGHT (kg /piece)		
		H	B	t ₁	t ₂	r	LENGTH(m)		
mm	kg/m	mm	mm	mm	mm	mm	6	9	12
100 x 100	17.2	100	100	6	8	10	103.2	154.8	206.4
125 x 125	23.8	125	125	6.5	9	10	142.8	214.2	285.6
150 x 150	31.5	150	150	7	10	11	189.0	283.5	378.0
175 x 175	40.2	175	175	7.5	11	12	241.2	361.8	482.4
200 x 200	49.9	200	200	8	12	13	299.4	449.1	598.8
250 x 250	72.4	250	250	9	14	16	434.4	651.6	868.8
300 x 300	94	300	300	10	15	18	564.0	846.0	1128.0
350 x 350	137	350	350	12	19	20	822.0	1233.0	1644.0
400 x 400	172	400	400	13	21	22	1032.0	1548.0	2064.0



เหล็กโวด์แฟรงค์ (Wide Flange) :

NOMINAL SIZE	WEIGHT	STANDARD SECTIONAL DIMENSION (mm.)					WEIGHT (kg /piece)		
		H	B	t ₁	t ₂	r	LENGTH (m)		
mm	kg/m	mm	mm	mm	mm	mm	6	9	12
150 x 75	14	150	75	5	7	8	84.0	126.0	168.0
150 x 100	21.1	148	100	6	9	11	126.6	189.9	253.2
200 x 100	21.3	200	100	5.5	8	11	127.8	191.7	255.6
200 x 150	30.6	194	150	6	9	13	183.6	275.4	367.2
250 x 125	29.6	250	125	6	9	12	177.6	266.4	355.2
250 x 175	44.1	244	175	7	11	16	264.6	396.9	529.2
300 x 150	36.7	300	150	6.5	9	13	220.2	330.3	440.4
300 x 200	56.8	294	200	8	12	18	340.8	511.2	681.6
350 x 175	49.6	350	175	7	11	14	297.6	446.4	595.2
350 x 250	79.7	340	250	9	14	20	478.2	717.3	956.4
400 x 200	66	400	200	8	13	16	396.0	594.0	792.0
400 x 300	107	390	300	10	16	22	642.0	963.0	1284.0
450 x 200	76	450	200	9	14	18	456.0	684.0	912.0



NOMINAL SIZE	WEIGHT	STANDARD SECTIONAL DIMENSION (mm.)					WEIGHT (kg /piece)		
		H	B	t ₁	t ₂	r	LENGTH (m)		
mm	kg/m	mm	mm	mm	mm	mm	6	9	12
450 x 300	124	440	300	11	18	24	744.0	1116.0	1488.0
500 x 200	89.6	500	200	10	16	20	537.6	806.4	1075.2
500 x 300	128	488	300	11	18	26	768.0	1152.0	1536.0
600 x 200	106	600	200	11	17	22	636.0	954.0	1272.0
600 x 300	151	588	300	12	20	28	906.0	1359.0	1812.0
700 x 300	185	700	300	13	24	28	1110.0	1665.0	2220.0
800 x 300	210	800	300	14	26	28	1260.0	1890.0	2520.0
900 x 300	243	900	300	16	28	28	1458.0	2187.0	2916.0

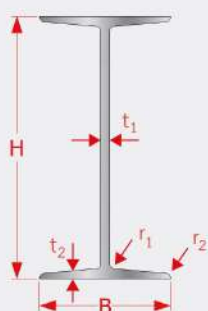


KIJSIAM STEEL BARS
COMPANY LIMITED

เหล็กไอบีบี (I-Section)

NOMINAL SIZE	WEIGHT	STANDARD SECTIONAL DIMENSION (mm.)				WEIGHT (kg /piece)		
		t ₁	t ₂	r ₁	r ₂	LENGTH (m)		
mm	kg/m	mm	mm	mm	mm	6	9	12
150 x 75	17.1	5.5	9.5	9.0	4.5	102.6	153.9	205.2
200 x 100	26.0	7.0	10.0	10.0	5.0	156.0	234.0	312.0
200 x 150	50.4	9.0	16.0	15.0	7.5	302.4	453.6	604.8
250 x 125	38.3	7.5	12.5	12.0	6.0	229.8	344.7	459.6
	55.5	10.0	19.0	21.0	10.5	333.0	499.5	666.0
300 x 150	48.3	8.0	13.0	12.0	6.0	289.8	434.7	579.6
	65.5	10.0	18.5	19.0	9.5	393.0	589.5	786.0
	76.8	11.5	22.0	23.0	11.5	460.8	691.2	921.6
350 x 150	58.5	9.0	15.0	13.0	6.5	351.0	526.5	702.0
	87.2	12.0	24.0	25.0	12.5	523.2	784.8	1046.4
400 x 150	72.0	10.0	18.0	17.0	8.5	432.0	648.0	864.0
	95.8	12.5	25.0	27.0	13.5	574.8	862.2	1149.6
450 x 175	91.7	11.0	20.0	19.0	9.5	550.2	825.3	1100.4
	115.0	13.0	26.0	27.0	13.5	690.0	1035.0	1380.0

NOMINAL SIZE	WEIGHT	STANDARD SECTIONAL DIMENSION (mm.)				WEIGHT (kg /piece)		
		t ₁	t ₂	r ₁	r ₂	LENGTH (m)		
mm	kg/m	mm	mm	mm	mm	6	9	12
600 x 190	133.0	13.0	25.0	25.0	12.5	798.0	1197.0	1596.0
	176.0	16.0	35.0	38.0	19.0	1056.0	1584.0	2112.0



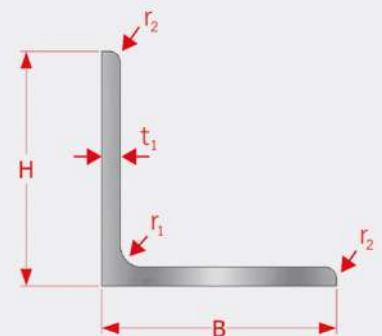
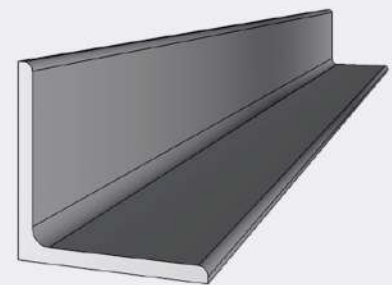
เหล็กฉาก (L-Section)



KIJSIAM STEEL BARS
COMPANY LIMITED

NOMINAL SIZE H x B	STANDARD SECTIONAL DIMENSION (mm.)			WEIGHT kg/m	WEIGHT (kg /piece) LENGTH
	t ₁	r ₁	r ₂		
mm	mm	mm	mm	kg/m	6m
25 x 25	3.0	4.0	2.0	1.12	6.72
	5.0	3.5	2.4	1.77	10.62
30 x 30	3.0	4.0	2.0	1.36	8.16
	5.0	5.0	2.4	2.18	13.08
40 x 40	3.0	4.5	2.0	1.83	10.98
	4.0	6.0	2.4	2.42	14.52
	5.0	4.5	3.0	2.95	17.70
45 x 45	6.0	6.0	2.4	3.52	21.12
	4.0	6.5	3.0	2.74	16.44
45 x 45	5.0	6.5	3.0	3.38	20.28
	3.0	7.0	2.4	2.33	13.98
50 x 50	4.0	6.5	3.0	3.06	18.36
	5.0	6.5	3.0	3.77	22.62
	6.0	6.5	4.5	4.43	26.58
60 x 60	4.0	6.5	3.0	3.68	22.08
	5.0	6.5	3.0	4.55	27.30
65 x 65	5.0	8.5	3.0	5.00	30.00
	6.0	8.5	4.0	5.91	35.46
	8.0	8.5	6.0	7.66	45.96
70 x 70	6.0	8.5	4.0	6.38	38.28
	6.0	8.5	4.0	6.85	41.10
75 x 75	9.0	8.5	6.0	9.96	59.76
	12.0	8.5	6.0	13.00	78.00
80 x 80	6.0	8.5	4.0	7.32	43.92
	6.0	10.0	5.0	8.28	49.68
	7.0	10.0	5.0	9.59	57.54

NOMINAL SIZE H x B	STANDARD SECTIONAL DIMENSION (mm.)			WEIGHT kg/m	WEIGHT (kg /piece) LENGTH
	t ₁	r ₁	r ₂		
mm	mm	mm	mm	kg/m	6m
90 x 90	10.0	10.0	7.0	13.3	79.80
	12.0	11.0	4.8	15.9	95.40
	13.0	10.0	7.0	17.0	102.00
100 x 100	7.0	10.0	5.0	10.7	64.20
	10.0	10.0	7.0	14.9	89.40
100 x 100	12.0	12.0	4.8	17.8	106.80
	8.0	12.0	5.0	14.7	88.20
120 x 120	9.0	12.0	6.0	17.9	107.40
	12.0	12.0	8.5	23.4	140.40
130 x 130	15.0	12.0	8.5	28.8	172.80
	12.0	14.0	7.0	27.3	163.80
150 x 150	15.0	14.0	10.0	33.6	201.60
	19.0	14.0	10.0	41.9	251.40
175 x 175	12.0	15.0	11.0	31.8	190.80
	15.0	15.0	11.0	39.4	236.40
200 x 200	15.0	17.0	12.0	45.3	271.80
	20.0	17.0	12.0	59.7	358.20
200 x 200	25.0	17.0	12.0	73.6	441.60
	35.0	24.0	18.0	128.0	768.00

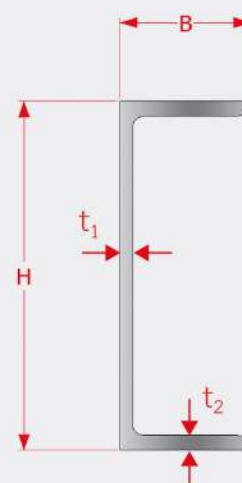
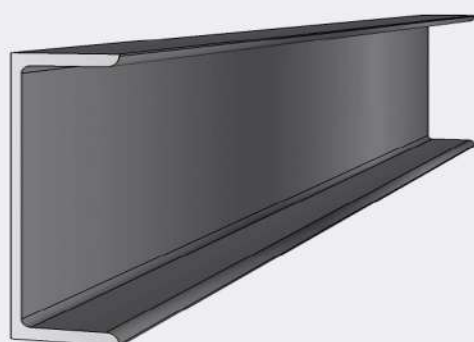




KIJSIAM STEEL BARS
COMPANY LIMITED

เหล็กรางหนา (U-Section)

NOMINAL SIZE H x B	WEIGHT	STANDARD SECTIONAL DIMENSION (mm.)		WEIGHT (kg /piece)
		t ₁	t ₂	LENGTH
mm	kg/m	mm	mm	6m
50 x 25	3.86	4.0	6.0	23.2
75 x 40	6.90	5.0	7.0	41.4
100 x 50	9.40	5.0	7.5	56.4
125 x 65	13.40	6.0	8.0	80.4
150 x 75	18.60	6.5	10.0	111.6
	24.00	9.0	12.5	144.0
180 x 75	21.40	7.0	10.5	128.4
200 x 80	24.60	7.5	11.0	147.6
200 x 90	30.30	8.0	13.5	181.8
250 x 90	34.60	9.0	13.0	207.6
	40.20	11.0	14.5	241.2
300 x 90	38.10	9.0	13.0	228.6
	43.80	10.0	15.5	262.8
	48.60	12.0	16.0	291.6
380 x 100	54.50	10.5	16.0	327.0
	62.00	13.0	16.5	372.0
	67.30	13.0	20.0	403.8

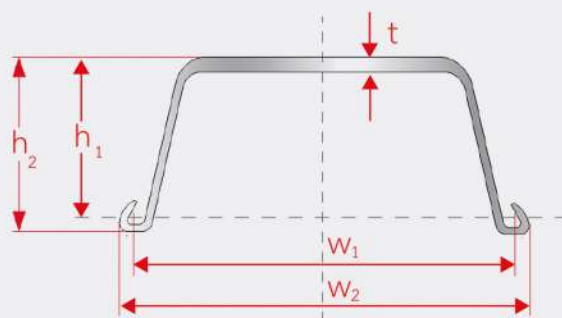
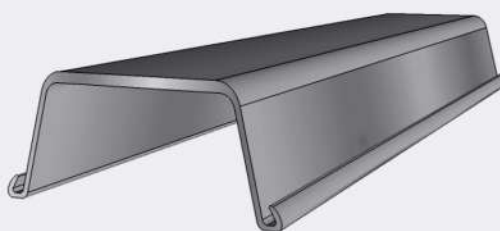




KIJSIAM STEEL BARS
COMPANY LIMITED

เสาเหล็กเข็มพืด (Sheet Pile)

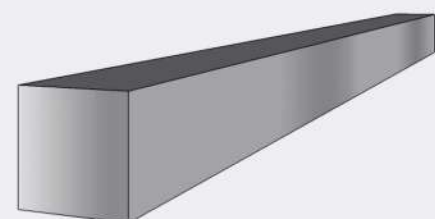
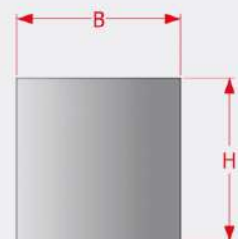
SECTION	WEIGHT kg/m	STANDARD SECTIONAL DIMENSION (mm.)					SECTIONAL AREA PER PILE cm ²	WEIGHT (kg /piece)	
		W ₁ (mm.)	W ₂ (mm.)	h ₁ (mm.)	h ₂ (mm.)	t (mm.)		LENGTH (m)	
SP-II	48.0	400	437.5	100	122.5	10.5	61.18	288.0	576.0
SP-III A	58.4	400	437.5	150	170.0	13.1	74.40	350.4	700.8
SP-III	60.0	400	439.0	125	149.0	13.0	76.42	360.0	720.0
SP-IV	76.1	400	443.0	170	193.5	15.5	96.99	456.6	913.2



เหล็กสี่เหลี่ยมตัน (Square Bars)

NOMINAL DIAMETER		WEIGHT	WEIGHT (kg /piece)
mm	in		LENGTH
mm	in	kg/m	6m
4.5 x 4.5	3/16 x 3/16	0.17	1.07
6 x 6	1/4 x 1/4	0.31	1.09
8 x 8	5/16 x 5/16	0.49	2.96
9 x 9	3/8 x 3/8	0.71	4.27
12 x 12	1/2 x 1/2	1.26	7.59
15 x 15	5/8 x 5/8	1.97	11.86
19 x 19	3/4 x 3/4	2.84	17.08
22 x 22	7/8 x 7/8	3.87	23.24
25 x 25	1 x 1	5.06	30.36
32 x 32	1-1/4 x 1-1/4	7.90	47.44
38 x 38	1-1/2 x 1-1/2	11.38	68.28
45 x 45	1-3/4 x 1-3/4	15.49	92.94
50 x 50	2 x 2	20.24	121.44
56 x 56	2-1/4 x 2-1/4	25.62	153.72

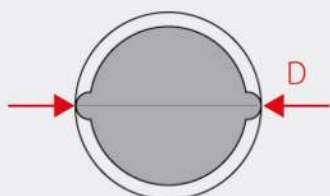
NOMINAL DIAMETER		WEIGHT	WEIGHT (kg /piece)
mm	in		LENGTH
mm	in	kg/m	6m
65 x 65	2-1/2 x 2-1/2	31.62	189.72
75 x 75	3 x 3	45.54	273.24
90 x 90	3-1/2 x 3-1/2	61.98	371.88
100 x 100	4 x 4	80.96	485.76
112 x 112	4-1/2 x 4-1/2	102.50	615.00
125 x 125	5 x 5	126.50	759.00



เหล็กเส้นขั้วอ้อย (Reinforced Deformed Bars)

Grade : SD 30 , SD 40 , SD 50

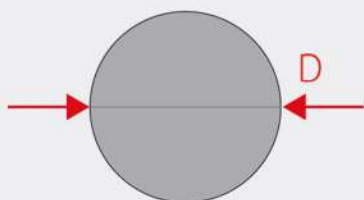
SIZE DESIGNATION	NOMINAL DIAMETER	NOMINAL MASS	NOMINAL CROSS SECTION AREA	WEIGHT (kg /piece)	
	mm.	kg/m.	(mm ²)	10m.	12m.
DB 10	10	0.616	78.5	6.16	7.392
DB 12	12	0.888	113.1	8.88	10.656
DB 16	16	1.578	201.1	15.78	18.936
DB 20	20	2.466	314.2	24.66	29.592
DB 25	25	3.853	490.9	38.53	46.236
DB 28	28	4.834	615.8	48.34	58.008
DB 32	32	6.313	804.2	63.13	75.756



เหล็กเส้นกลม (Reinforced Round Bar)

Grade : SR 24

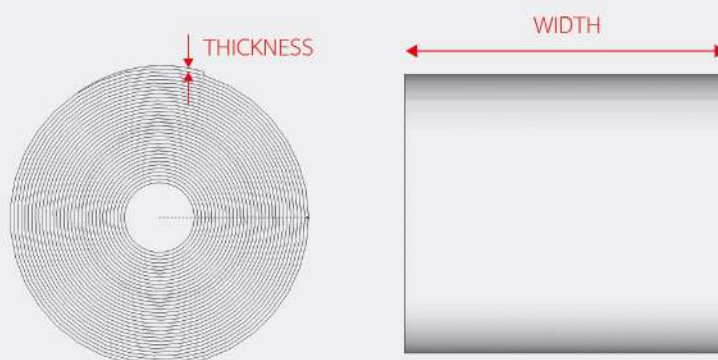
SIZE DESIGNATION	NOMINAL DIAMETER	NOMINAL MASS	NOMINAL CROSS SECTION AREA	WEIGHT (kg /piece)
	mm.	kg/m.	(mm ²)	10m.
RB 6	6.0	0.22	28.3	2.22
RB 9	9.0	0.49	63.6	4.99
RB 12	12.0	0.88	113.1	8.88
RB 15	15.0	1.38	176.7	13.87
RB 19	19.0	2.22	283.5	22.26
RB 25	25.0	3.85	490.9	38.53



เหล็กแผ่นม้วนรีดร้อน (Hot Rolled Coil)

: มีหลายมาตรฐานขึ้นอยู่กับการใช้งาน

GRADE	THICKNESS	WIDTH	APPROX. WEIGHT
	mm.	mm.	tons.
SS300	1.2 - 25.0	750 - 1,550	14 - 30
SS330			
SS400			
HR1			
SPHC			



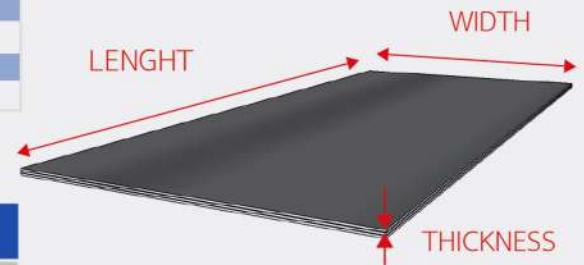
เหล็กแบนรีด , เหล็กแบนตัด (Flat Bars)

THICKNESS (t)	WIDTH*									
mm.	15	25	32	38	50	65	75	100	125	150
3	2.12	3.54	4.53	5.37	7.07	9.19	10.61	14.14	17.68	21.21
4	2.83	4.71	6.03	7.17	9.43	12.26	14.14	18.86	23.57	28.28
4.5	3.18	5.30	6.79	8.06	10.61	13.79	15.91	21.21	26.52	31.82
6	4.24	7.07	9.05	10.75	14.14	18.38	21.21	28.28	35.35	42.43
12	8.49	14.14	18.10	21.50	28.28	36.77	42.43	56.57	70.71	84.85
15	10.61	17.68	22.63	26.87	35.35	45.96	53.03	70.71	88.39	106.06
19	13.43	22.39	28.66	34.03	44.78	58.22	67.17	98.57	111.96	134.35
25	17.68	29.46	37.71	44.78	58.92	76.60	88.39	117.85	147.31	176.77



เหล็กแผ่นดำ (Steel Plate)

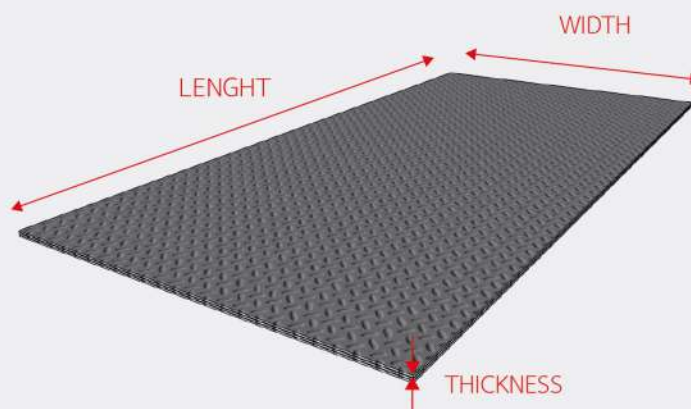
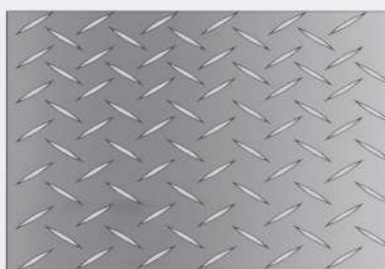
THICKNESS (t)	DIMENSION (Width x Lenght)					
	4' x 8'	4' x 10'	4' x 20'	5' x 10'	5' x 20'	6' x 20'
mm.	(1219 x 2438)	(1219 x 3048)	(1219 x 6096)	(1524 x 3048)	(1524 x 6096)	(1829 x 6096)
1.2	28					
1.5	35					
1.6	37					
1.8	42					
2	47	59		73		
2.3	54	67		84		
2.5	58	73		91		
2.8	65	82		102		
3	70	88	175	110	219	
3.2	75	93	187	117	233	
3.5	82	102	204	128	255	
4	93	117	233	146	292	
4.5	105	131	263	164	328	
5	117	146	292	182	365	
6	140	175	350	219	438	
7	163	204	408	255	510	
8	187	233	467	292	583	700
9	210	263	525	328	656	788
10	233	292	583	365	729	875
11	257	321	642	401	802	963
12	280	350	700	438	875	1050
12.7	296	370	741	463	926	1112
13	303	379	758	474	948	1138
14	327	408	817	511	1021	1225
15	350	438	875	547	1094	1313
16	373	467	933	583	1167	1400
17	397	496	992	620	1240	1488
18	420	525	1050	656	1313	1575
19	443	554	1108	693	1386	1663
20	467	583	1167	729	1459	1750



THICKNESS (t)	DIMENSION (Width x Lenght)					
	4' x 8'	4' x 10'	4' x 20'	5' x 10'	5' x 20'	6' x 20'
mm.	(1219 x 2438)	(1219 x 3048)	(1219 x 6096)	(1524 x 3048)	(1524 x 6096)	(1829 x 6096)
21	490	613	1225	766	1532	1838
22	513	642	1283	802	1604	1926
23	537	617	1342	839	1677	2013
24	560	700	1400	875	1750	2101
25	583	729	1458	912	1823	2188
26	607	758	1517	948	1896	2276
27	630	788	1575	985	1969	2363
28	653	817	1633	1021	2042	2451
29	677	846	1692	1057	2115	2538
30	700	875	1750	1094	2188	2626
32	747	933	1867	1167	2334	2801
34	793	992	1983	1240	2480	2976
36	840	1050	2100	1313	2625	3151
38	887	1108	2217	1386	2771	3326
40	933	1167	2333	1459	2917	3501
45	1050	1313	2625	1641	3282	3939
50	1166	1458	2917	1823	3646	4376
60	1400	1750	3500	2188	4376	5251
70	1633	2042	4083	2553	5105	6127
80	1866	2333	4667	2917	5834	7004
90	2100	2625	5250	3282	6465	7877
100	2333	2917	5833	3646	7293	8752

แผ่นเหล็กลายรีดร้อน (Checkered Plates)

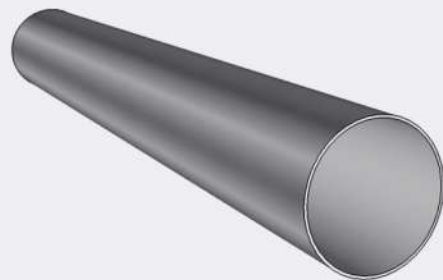
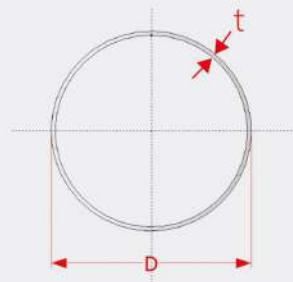
THICKNESS (t) mm.	DIMENSION (Width x Lenght)	
	4' x 8' (1219 x 2438)	5' x 10' (1524 x 3048)
3	75.0	
4	99.0	
4.5	110.0	172.0
5	122.0	
6	145.0	226.0
8	192.0	
9	215.0	335.0
12	286.0	446.0



เหล็กท่อดำ , แป๊ปดำ (Carbon Steel Pipes)

DIAMETER	NOMINAL SIZE	WALL THICKNESS (t)	UNIT MASS	CROSS SECTIONAL	WELGHT (kg/peice)
mm	in	mm	kg/m	cm2	6m
21.7	1/2	2.0	0.97	1.24	5.82
27.2	3/4	2.0	1.24	1.58	7.44
		2.3	1.41	1.80	8.46
34	1	1.6	1.28	1.63	7.68
		1.8	1.43	1.82	8.58
		2.0	1.58	2.01	9.48
		2.3	1.80	2.29	10.80
42.7	1-1/4	2.0	2.01	2.56	12.06
		2.3	2.29	2.92	13.74
		3.2	3.12	3.97	18.72
48.6	1-1/2	1.6	1.85	2.36	11.10
		1.8	2.08	2.65	12.48
		2.0	2.30	2.93	13.80
		2.3	2.63	3.35	15.78
		3.0	3.37	4.30	20.22
60.5	2	1.8	2.61	3.32	15.66
		2.0	2.89	3.68	17.34
		2.3	3.30	4.21	19.80
		3.0	4.25	5.42	25.50
		3.2	4.52	5.76	27.12
76.3	2-1/2	1.8	3.31	4.21	19.86
		2.0	3.66	4.67	21.96
		2.3	4.20	5.35	25.20
		3.0	5.42	6.91	32.52
89.1	3	3.2	4.92	6.27	29.52
		3.2	6.78	8.64	40.68
		3.5	7.39	9.41	44.34
		4.0	8.39	10.69	50.34
		4.5	9.39	11.96	56.34

DIAMETER	NOMINAL SIZE	WALL THICKNESS (t)	UNIT MASS	CROSS SECTIONAL	WELGHT (kg/peice)
mm	in	mm	kg/m	cm2	6m
101.6	3-1/2	3.2	7.77	9.89	46.62
		4.0	9.63	12.26	57.78
		4.5	10.78	13.73	64.68
		5.0	11.91	15.17	71.46
114.3	4	3.2	8.77	11.17	52.62
		3.5	9.56	12.18	57.36
		4.0	10.88	13.86	65.28
		4.5	12.19	15.52	73.14
139.8	5	4.0	13.40	17.07	80.40
		4.5	15.02	19.13	90.12
		5.0	16.62	21.17	99.72
165.2	6	4.5	17.80	22.72	106.80
		5.0	19.80	25.16	118.80
		6.0	23.60	30.01	141.60
190.7	7	4.5	20.70	26.32	124.20
		6.0	31.53	40.17	189.18
216.3	8	4.5	23.50	29.94	141.00
		6.0	31.10	39.64	186.60
		8.0	41.10	52.35	246.60
267.4	10	6.0	38.70	49.27	232.20
		9.0	57.30	73.06	343.80





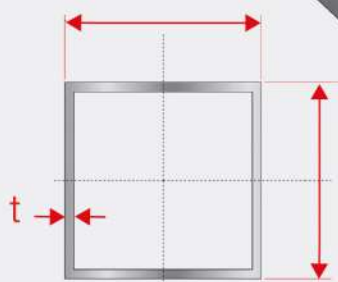
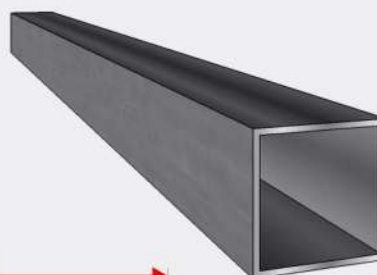
KIJSIAM STEEL BARS
COMPANY LIMITED

แป๊ปเหล็กสี่เหลี่ยม , เหล็กกล่อง (Square Pipes)

NOMINAL SIZE		WALL THICKNESS (t)	UNIT MASS	WEIGHT (kg/pipe)
mm	in			
19x19	3/4x3/4	1.2	0.72	4.32
		1.6	0.82	4.92
		2.0	0.99	5.94
25x25	1 x 1	1.2	0.87	5.21
		1.4	1.00	5.99
		1.6	1.12	6.74
		1.8	1.25	7.47
		2.0	1.36	8.18
		2.3	1.53	9.19
32x32	1-1/4 x 1-1/4	1.8	1.64	9.85
		2.0	1.80	10.82
		2.3	2.04	12.32
38x38	1-1/2 x 1-1/2	1.8	1.98	11.88
		2.0	2.18	13.08
		2.3	2.47	14.83
		3.2	3.29	19.74
50x50	2 x 2	1.6	2.38	14.28
		1.8	2.66	15.95
		2.0	2.93	17.60
		2.3	3.34	20.03
		2.6	3.73	22.40
		2.8	3.99	23.95
		3.0	4.25	25.47
3.2	4.50	26.97		
60x60	2-3/8 x 2-3/8	2.3	4.06	24.36
		3.2	5.50	33.00
75x75	3 x 3	1.8	4.07	24.42
		2.0	4.50	27.02
		2.3	5.14	30.86
		3.2	7.01	42.04

NOMINAL SIZE		WALL THICKNESS (t)	UNIT MASS	WEIGHT (kg/pipe)
mm	in			
100x100	4 x 4	2.0	6.07	36.44
		2.3	6.95	41.69
		2.8	8.39	50.32
		3.0	8.96	53.73
		3.2	9.52	57.12
		4.0	11.73	70.40
125x125	5 x 5	4.5	13.08	78.51
		2.0	7.64	45.86
		2.3	8.75	52.53
		2.6	9.86	59.14
		2.8	10.59	63.51
		3.0	11.31	67.86
		3.2	12.03	72.19
150x150	6 x 6	4.0	14.87	89.24
		4.5	16.62	99.70
		4.0	18.01	108.08
		4.5	20.15	120.90
		5.0	22.26	133.56
200x200	8 x 8	6.0	26.40	158.41
		4.5	27.21	163.29
		5.0	30.11	180.66
		6.0	35.82	214.93
		9.0	52.34	314.03
		12.0	67.93	407.56

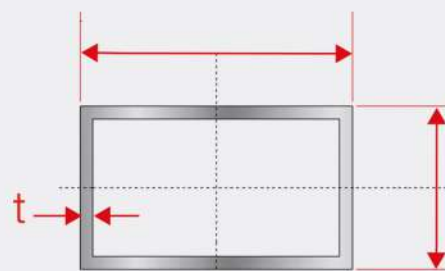
*น้ำหนักจริง เบี่ยงเบนตามมาตรฐานอุตสาหกรรม



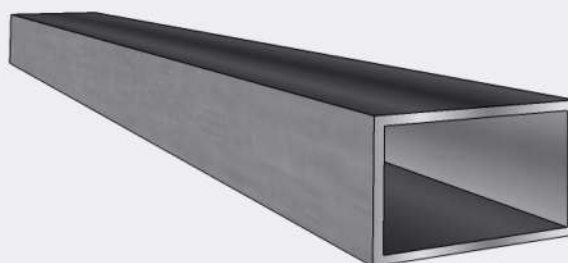
เหล็กแป๊ปสี่เหลี่ยมแบน , เหล็กกล่องแบน (Rectangular Pipes)

NOMINAL SIZE		WALL THICKNESS (t)	UNIT MASS	CROSS SECTIONAL	WEIGHT (kg/piece)
mm	in	mm	kg/m	cm ²	6m
50 x 25	2 x 1	1.2	1.34	1.71	8.04
		1.4	1.55	1.97	9.30
		1.6	1.75	2.23	10.50
		1.8	1.95	2.49	11.70
		2.0	2.15	2.74	12.90
		2.3	2.44	3.10	14.64
75 x 38	3 x 1-1/2	1.8	3.03	3.85	18.18
		2.0	3.34	4.26	20.04
		2.3	3.81	4.85	22.86
		3.0	4.86	6.19	29.16
		3.2	5.15	6.56	30.90
100 x 50	4 x 2	1.6	3.64	4.63	21.84
		1.8	4.07	5.19	24.42
		2.0	4.50	5.74	27.00
		2.3	5.14	6.55	30.84
		2.6	5.77	7.36	34.62
		2.8	6.19	7.88	37.14
		3.0	6.60	8.41	39.60
		3.2	7.01	8.93	42.06
		3.6	7.81	9.95	46.86
125 x 75	5 x 3	2.0	6.07	7.74	36.42
		2.3	6.95	8.85	41.70
		3.0	8.95	11.41	53.70
		3.2	9.52	12.13	57.12
		3.6	10.64	13.55	63.84
150 x 50	6 x 2	2.3	6.95	8.85	41.70
		3.2	9.52	12.13	57.12

NOMINAL SIZE		WALL THICKNESS (t)	UNIT MASS	CROSS SECTIONAL	WEIGHT (kg/piece)
mm	in	mm	kg/m	cm ²	6m
200 x 100	8 x 4	4.0	18.07	22.95	108.06
		4.5	20.15	25.67	120.90
		5.0	22.26	28.36	133.56
		6.0	26.40	33.63	158.40



*น้ำหนักจริง เบี่ยงเบนตามมาตรฐานอุตสาหกรรม

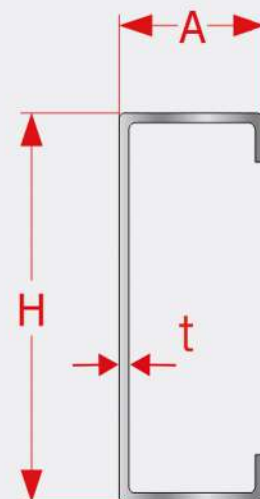
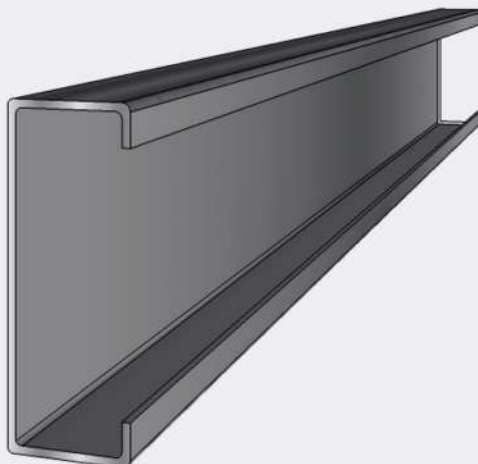


เหล็กตัวซี (Lip Channel)

NOMINAL SIZE	THICKNESS (t)	WEIGHT	WEIGHT (kg/piece)
mm	mm	kg/m	6m
60 x 30 x 10	1.6	1.63	9.78
	2.0	1.99	11.94
	2.3	2.25	13.50
75 x 35 x 15	2.3	2.89	17.34
75 x 45 x 15	1.6	2.32	13.92
	2.3	3.25	19.50
	2.0	3.56	21.36
100 x 50 x 20	2.3	4.06	24.36
	2.8	4.87	29.22
	3.2	5.50	33.00
	4.0	6.71	40.26
125 x 50 x 20	2.3	4.51	27.06
	3.2	6.13	36.78
	4.0	7.50	45.00
	4.5	8.32	49.92
150 x 50 x 20	2.3	4.96	29.76
	3.2	6.76	40.56
	4.5	9.20	55.20
150 x 65 x 20	2.3	5.50	33.00
	3.2	7.51	45.06
	4.0	9.22	55.32
150 x 75 x 20	3.2	8.01	48.06
	4.0	9.85	59.10
	4.5	11.00	66.00

NOMINAL SIZE	THICKNESS (t)	WEIGHT	WEIGHT (kg/piece)
mm	mm	kg/m	6m
150 x 75 x 25	3.2	8.27	49.62
	4.0	10.20	61.20
	4.5	11.30	67.80
200 x 75 x 20	3.2	9.27	55.62
	4.0	11.40	68.40
	4.5	12.70	76.20
200 x 75 x 25	3.2	12.13	72.78
	4.0	14.95	89.70
	4.5	16.67	100.02

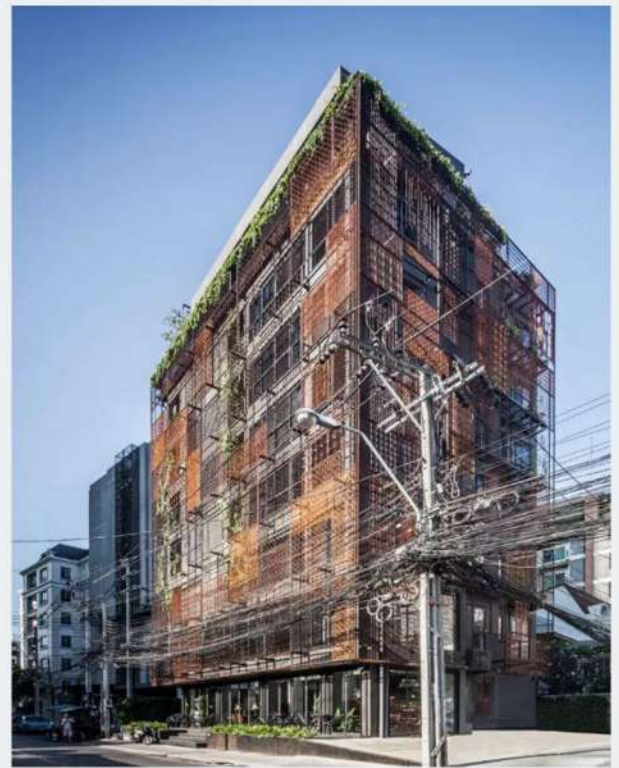
* บางคนอาจเข้าใจผิดระหว่างเหล็กตัวซี C และเหล็กรางน้ำ C



OUR CLIENTS



**FOUR POINT BY SHERATON
BANGKOK**



**IR-ON hotel
BANGKOK**



Dusit Thani

**DUSIT PRINCESS
NAKORN RACHASIMA**



The Mall Korat

Nakornrachasima



Save One Market

Nakornrachasima



ANGLO
international school
NAKORN RACHASIMA



Assumption 's College
NAKORN RACHASIMA



Saint Mary's College
NAKORN RACHASIMA



LAND & HOUSES

Land & Houses Park

NAKORN RACHASIMA

LAND & HOUSES

Land & Houses INIZIO

KHON KAEN



LAND & HOUSES

Land & House Siwalee

KHON KAEN



Tesco Lotus Rama 3
Bangkok



Tesco Lotus north
Pattaya



Tesco Lotus Prachachun
Bangkok





โรงงาน ปึงหงีเชียง
Nakornrachasima



โรงงานหมูแผ่นเจ้าสัว
Nakornrachasima



ฟาร์มไก่ ซี.พี
แก่งคอย



สถานีรถไฟรางคู่ : จิระ - บ้านไผ่
KHON KAEN



โรงเรียนราชสีมาวิทยาลัย
NAKORN RACHASIMA



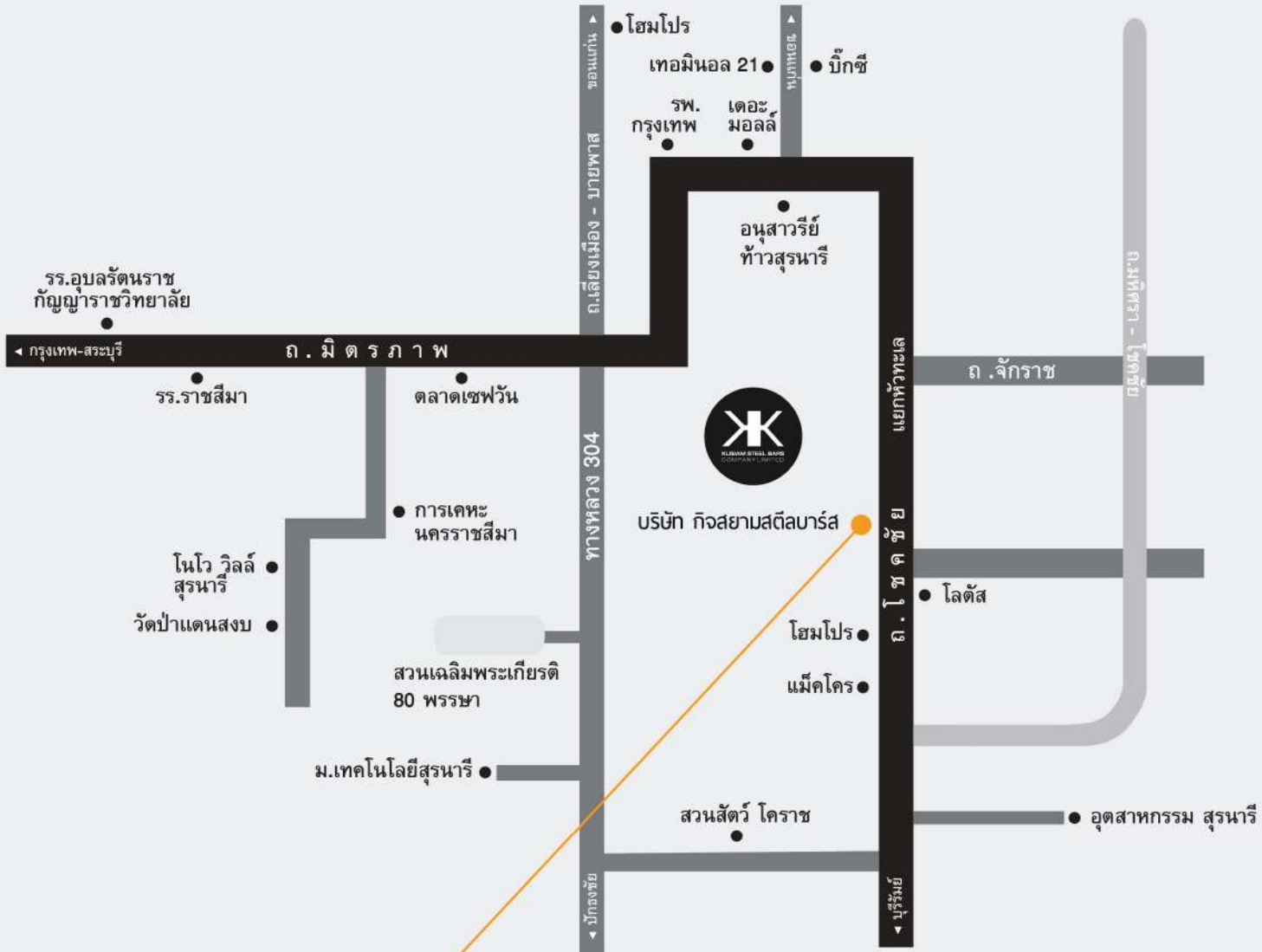
SUPALAI VILLE
NAKORN RACHASIMA



Fairy Plaza
Khonkaen



Citrus
Sukhumvit 13
Bangkok



บริษัท กิจสยามสตีลบาร์ส จำกัด
 1400 หมู่ 1 ต.ห้วยทะเล อ.เมือง
 จ.นครศรีธรรมราช 30000



โทร : 044 - 265555

LINE : @kijiam5

อีเมล : info@kijiamsteel.com

www.kijiamsteel.com